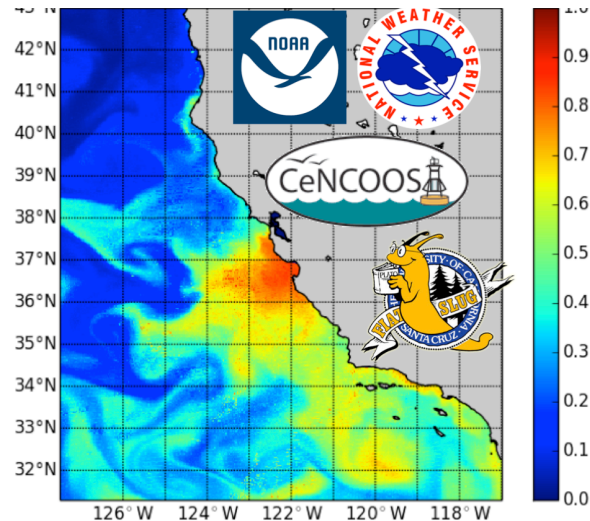


# HAB Forecast System for Coastal California

Clarissa Anderson<sup>1</sup>, Raphael Kudela<sup>1</sup>, Fred Bahr<sup>2</sup>, Yi Chao<sup>3</sup>,  
Dale Robinson<sup>4</sup>, and Richard Stumpf<sup>5</sup>



<sup>1</sup>University of California Santa Cruz

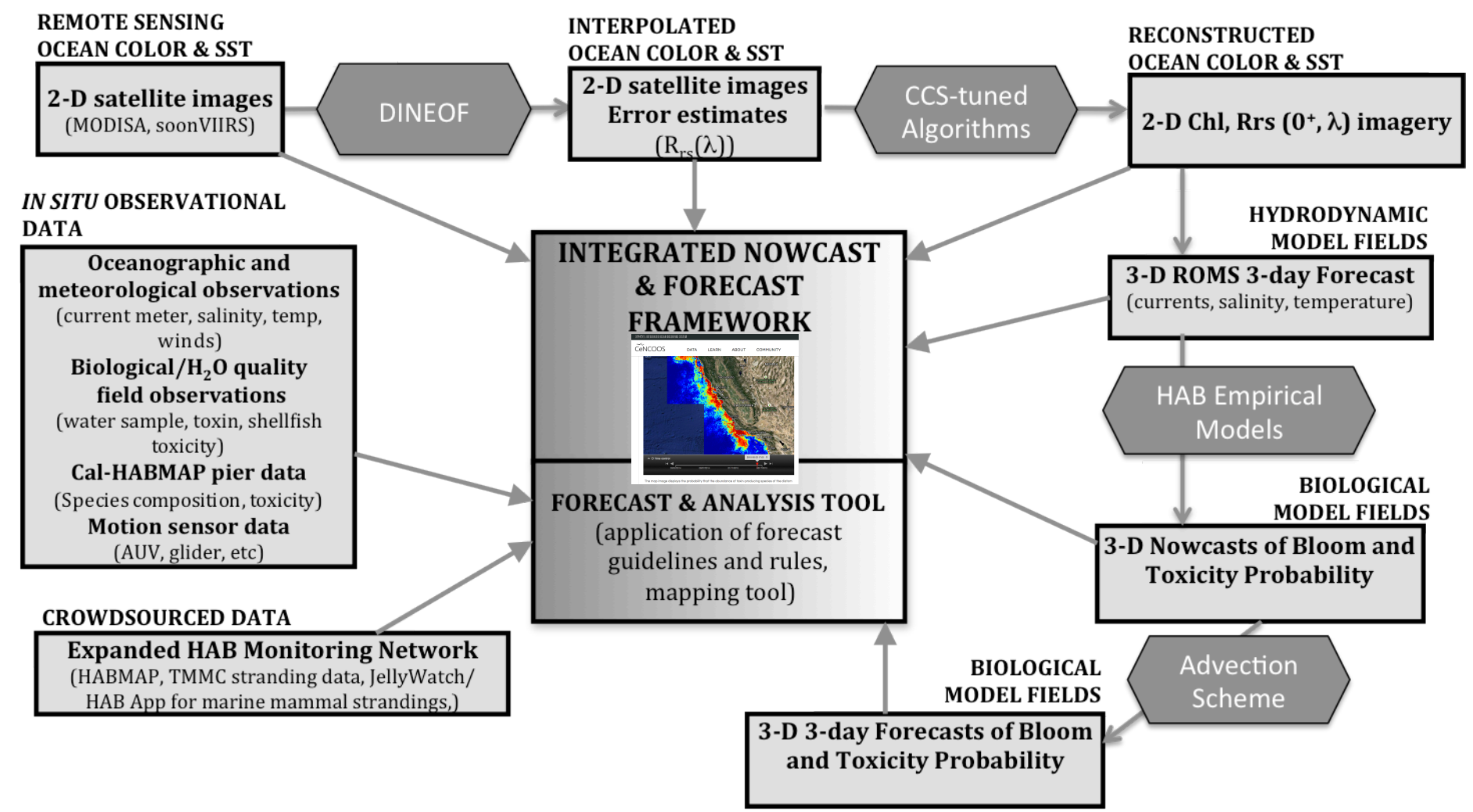
<sup>2</sup>Central & Northern California Ocean  
Observing System (CeNCOOS)

<sup>3</sup>UCLA JIFRESSE/RSS Inc.

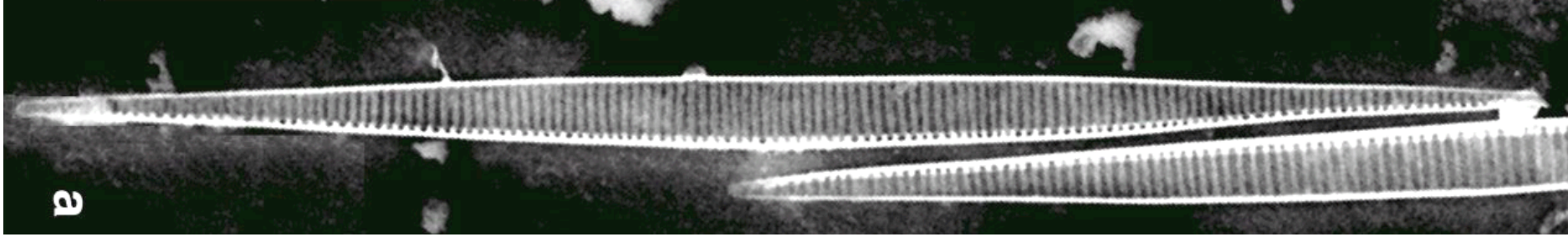
<sup>4</sup>NOAA CoastWatch

<sup>5</sup>NOAA National Ocean Service

# NOWCAST AND FORECAST SYSTEM FOR DOMOIC ACID EVENTS



NASA Applied Sciences Program, Terrestrial Hydrology, Ocean Biology and Biogeochemistry Programs  
“Ecological Forecasting for Conservation and Resource Management”  
“Remote Sensing of Water Quality”

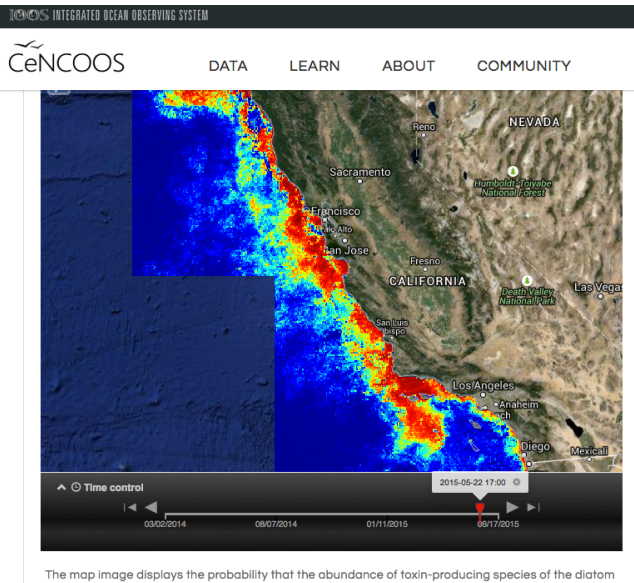


# TALK OVERVIEW

- **Skill Assessment**
  - Massive Bloom of 2015
- **Technical Updates**
  - Web Portal
  - New crowdsourcing opportunity
  - Transfer to operational environment

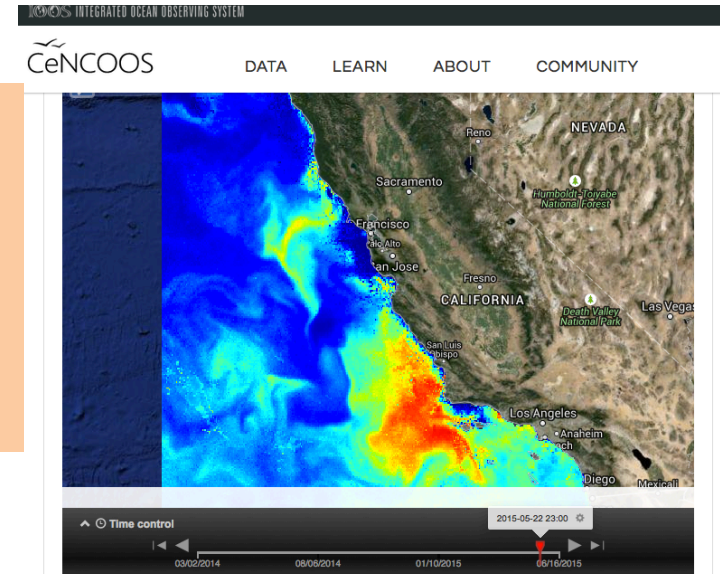


# 2015 BLOOM of DOOM: May – September (and beyond)



**Santa Barbara to Alaska:**  
anchovy & sardine  
closures

shellfish advisories  
and closures



## Unusual Mortality Event – includes 11 fin whales

Photo by NOAA shows one of about 30 large whales which have washed up in the Gulf of Alaska since May (and yes, those are regular-sized grizzly bears).



Santa Cruz Sentinel  
**NEWS**

## Dungeness Crab Closure! Recreational and Commercial Harvests (Nov-May)

News ▾ Sports ▾ Business ▾ Entertainment ▾ Lifestyle ▾ Opinion ▾ Obituaries ▾ Place

Home ▾ News

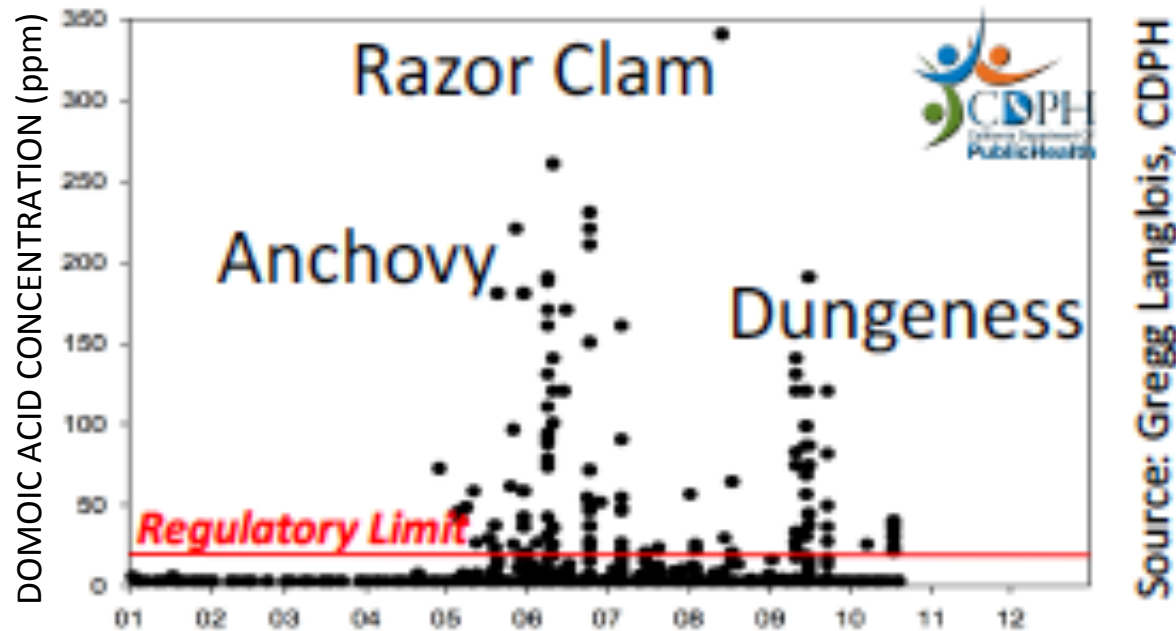
## California's crab-season delay claims Christmas

By Aaron Kinney [akinney@bayareanewsgroup.com](mailto:akinney@bayareanewsgroup.com)

"The domoic acid Grinch took our Christmas crab!" said Phil DiGirolamo, owner of Phil's Fish Market, a popular spot for crab lovers in Moss Landing.



# 2015 – AN UNPRECEDENTED EVENT



- Largest bloom ever recorded on West Coast of N. America
- DA reached new records in Dungeness, anchovy, and razor clams (commercial Dungeness fishery reopening next week for the rest of CA, except Humboldt Co.)
- Peak total concentrations > 100,000 ng/L

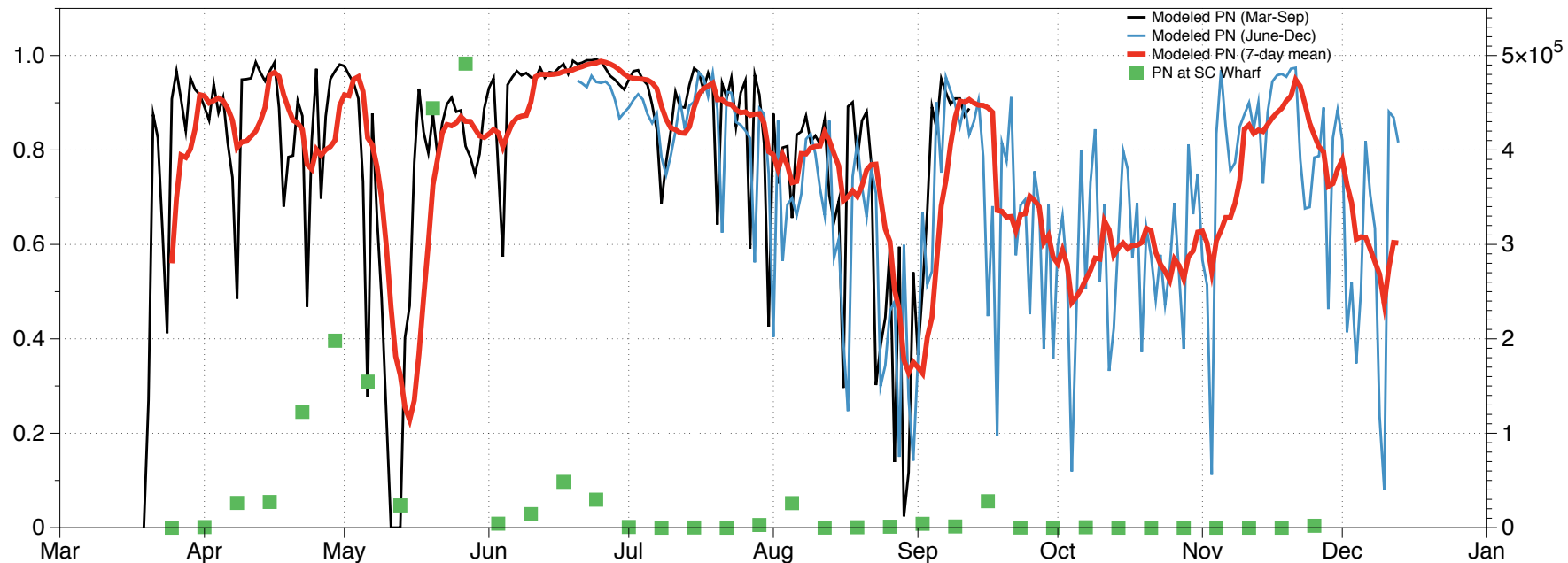






# 2015 – *Pseudo-nitzschia* – Santa Cruz WHARF

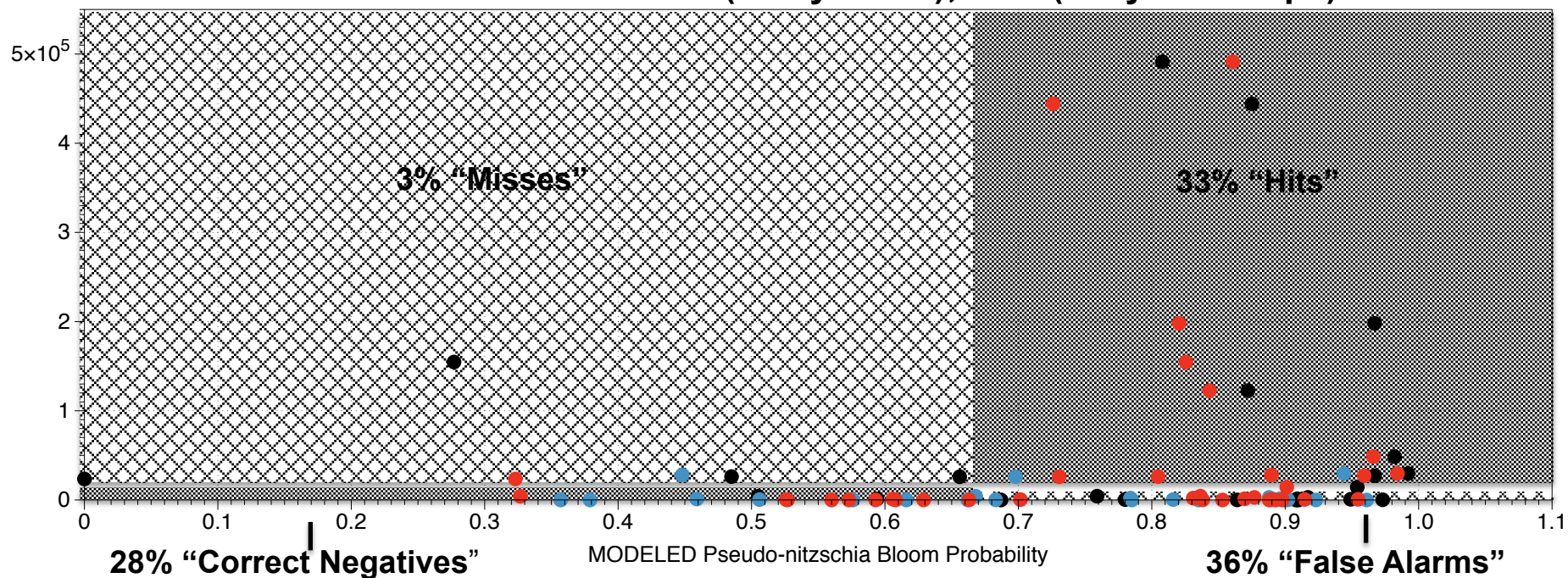
MODELED *Pseudo-nitzschia* Bloom Probability



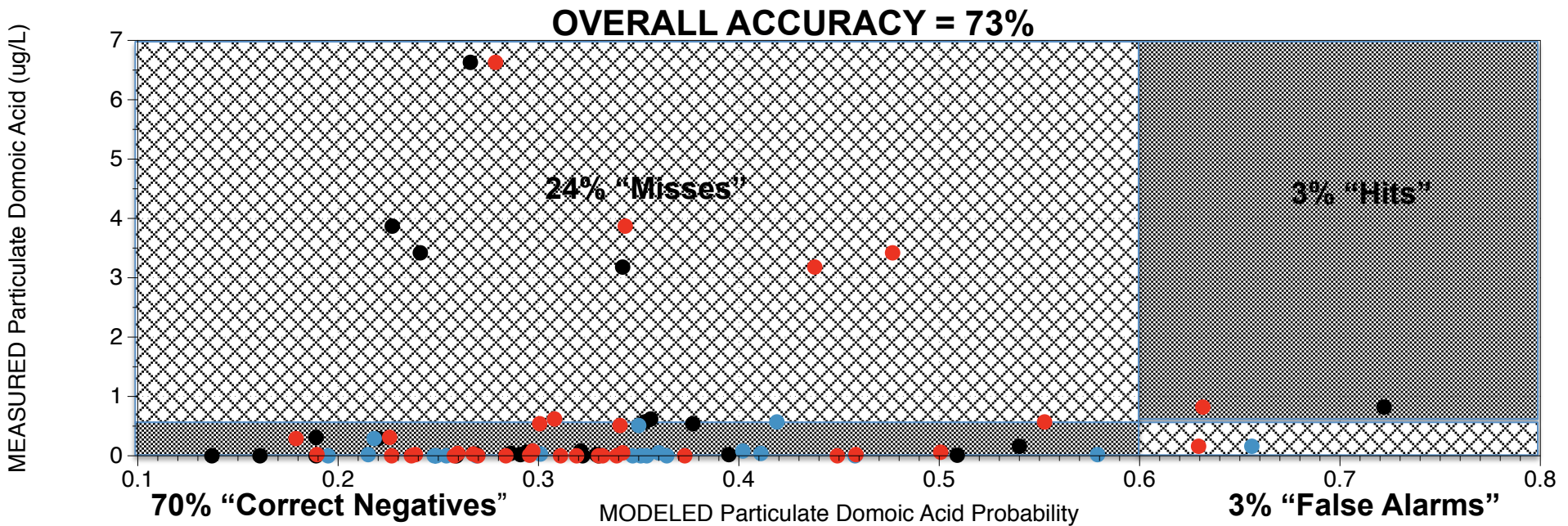
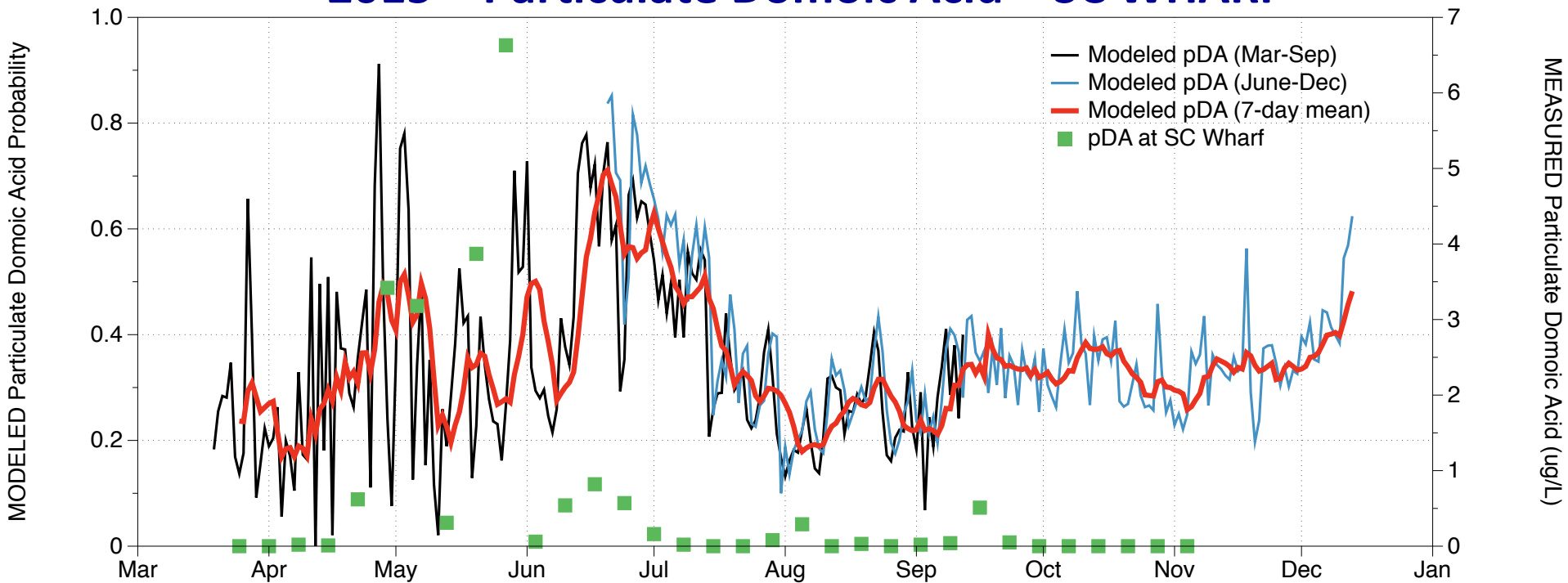
OBSERVED *Pseudo-nitzschia* spp. Abundance (cells/L)

**OVERALL ACCURACY = 61% (7-day mean); 43% (daily matchups)**

OBSERVED *Pseudo-nitzschia* spp. Abundance (cells/L)

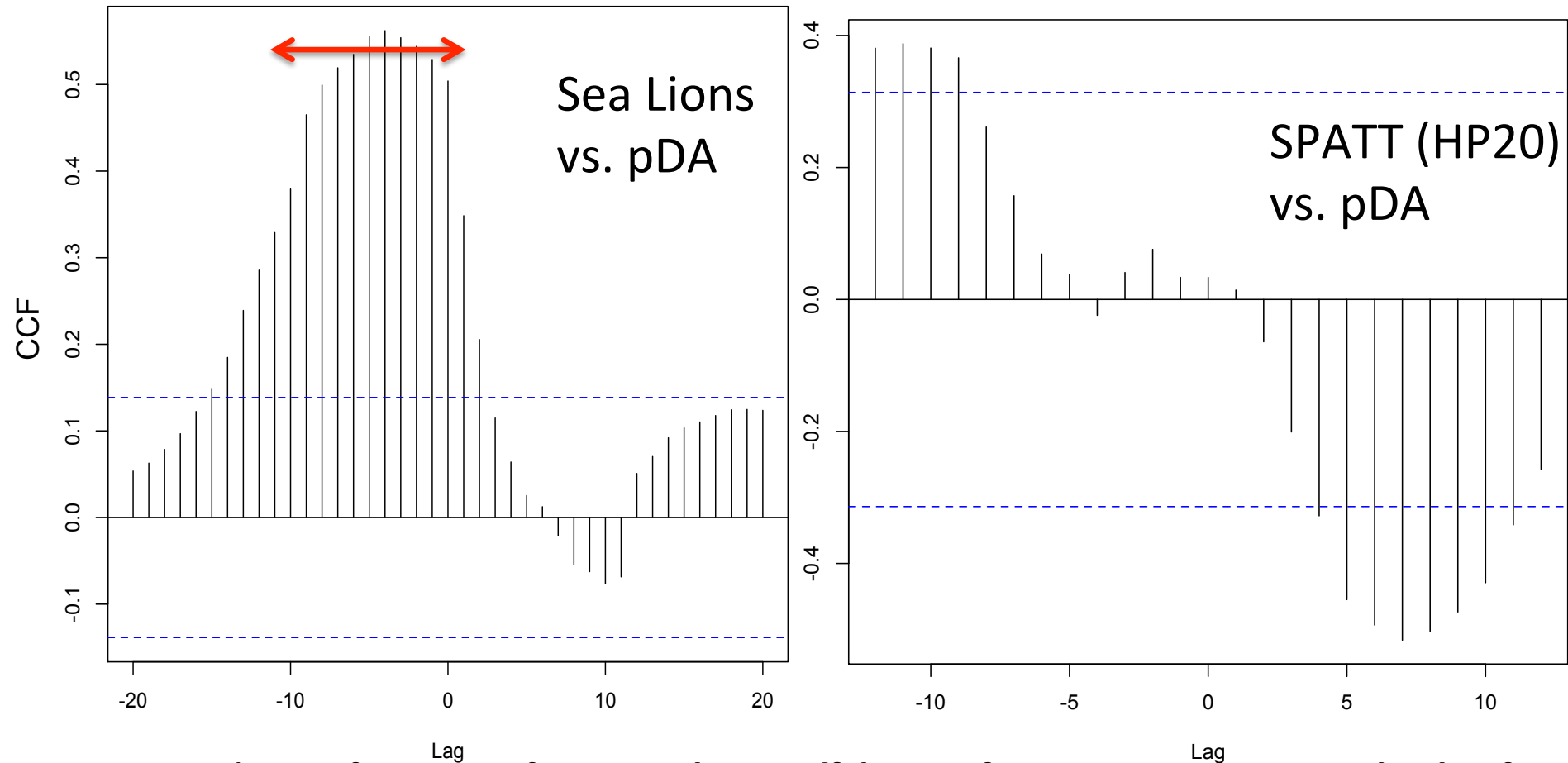


# 2015 – Particulate Domoic Acid – SC WHARF



# Year 1 FEASIBILITY STUDY - SKILL ASSESSMENT

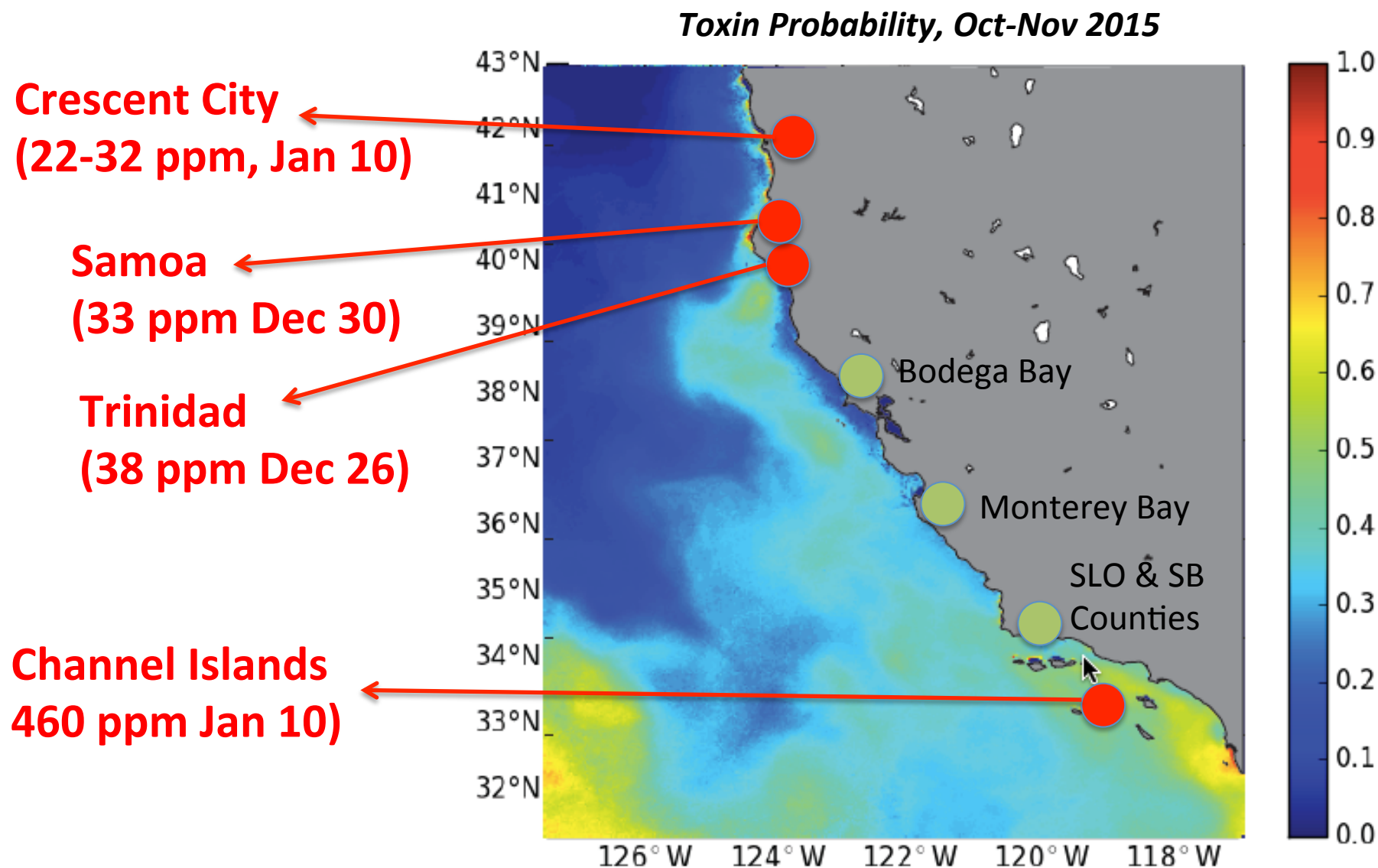
The pDA model correlates well with central CA stranding peaks as early as 10 days before they occur...and with SPATT DA 9-12 days ahead

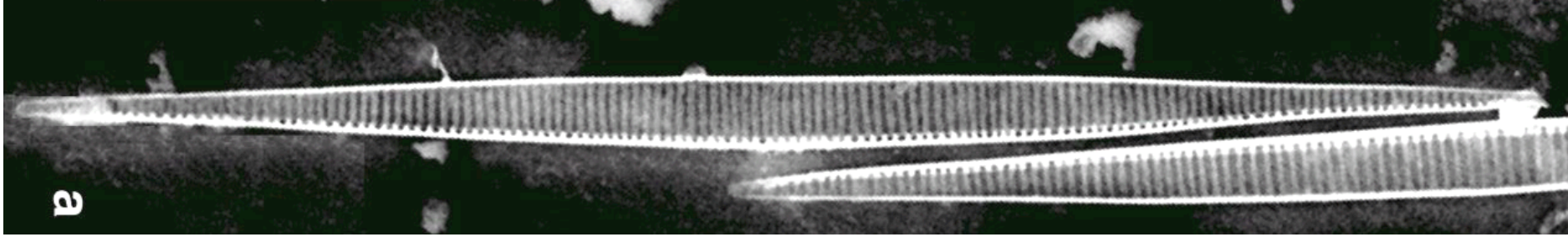


Cross correlation functions for a **pixel just offshore of Santa Cruz Municipal Wharf**. For marine mammals, the modeled time series was smoothed with a 30-day running average (low-pass filter) and neither data set was corrected with ARIMA prior to analysis since the autocorrelation function appeared stationary.



# The model provides ~seasonal prediction of trophic transfer



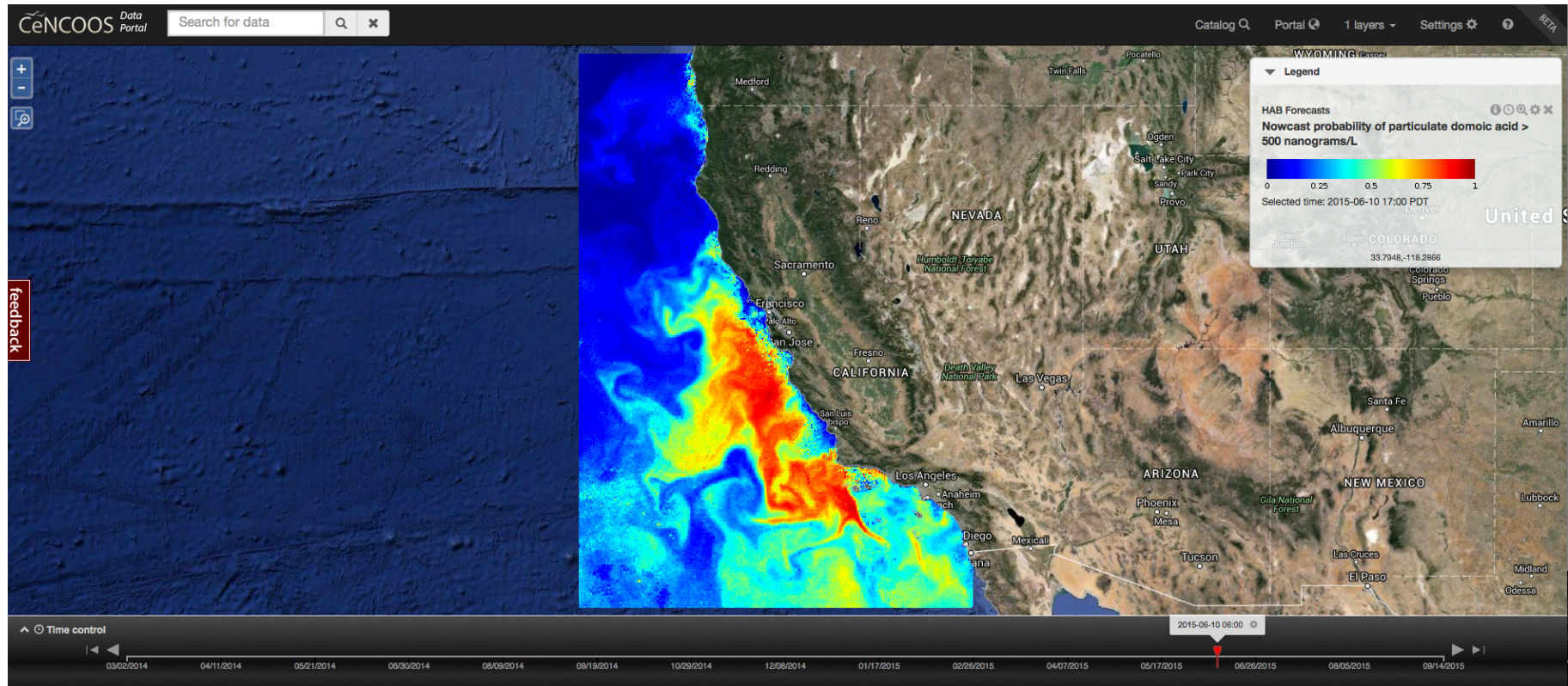


# TALK OVERVIEW

- **Skill Assessment**
  - Year 1 Feasibility Study (2014)
  - Massive Bloom of 2015
- **Technical Updates**
  - Web Portal
  - New crowdsourcing opportunity
  - Transfer to operational environment

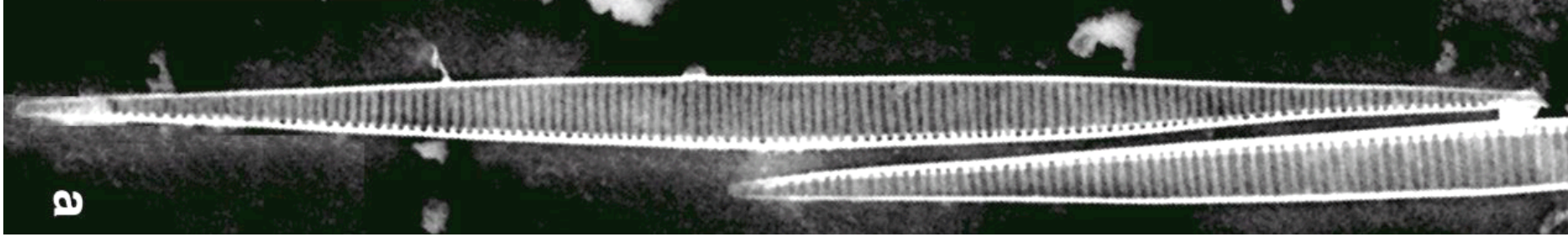
# Interactive CeNCOOS Data Portal

## HAB Nowcasts and Forecasts



<http://www.cencoos.org/data/models/habs/previous>





# CITIZEN SCIENCE

- Ingesting marine mammals stranding datasets into data portal at CeNCOOS in collaboration with Axiom
  - The Marine Mammal Center – integrating full stranding datasets, with attention to DA toxicosis cases as proxy for offshore HAB events in near real-time
  - BeachCOMBERS data from volunteer network – nonspecific stranded/dead marine mammals & birds

# Technology

## Mobile Microscopy taking imaging to new places

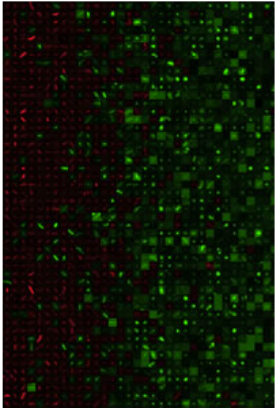


### Software

We develop custom software for our mobile microscopes to coordinate image collection, annotation, data management, web connection, and, for a growing number of applications, automated image analysis.

[Publications](#)

[CellScope Explorer App](#)



### Field Studies

Together with collaborators around the world, we are testing the use of mobile microscopy to solve real-world problems in places including Vietnam, India, Thailand, Cameroon, the Ivory Coast, and Hawaii.

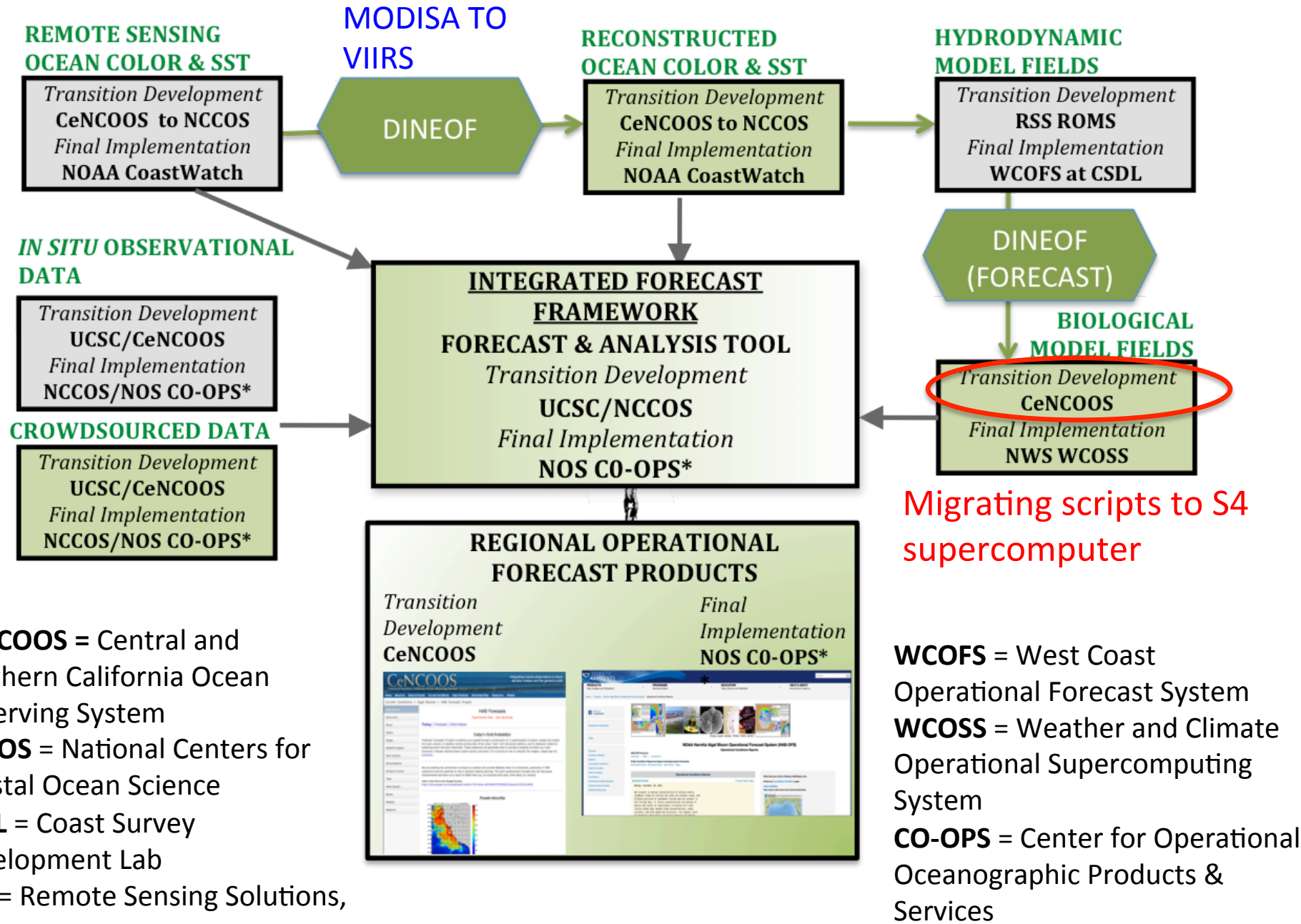
[Publications](#)

[Applications](#)



## HAB Monitoring in California Collaboration with SCCWRP & HABMAP

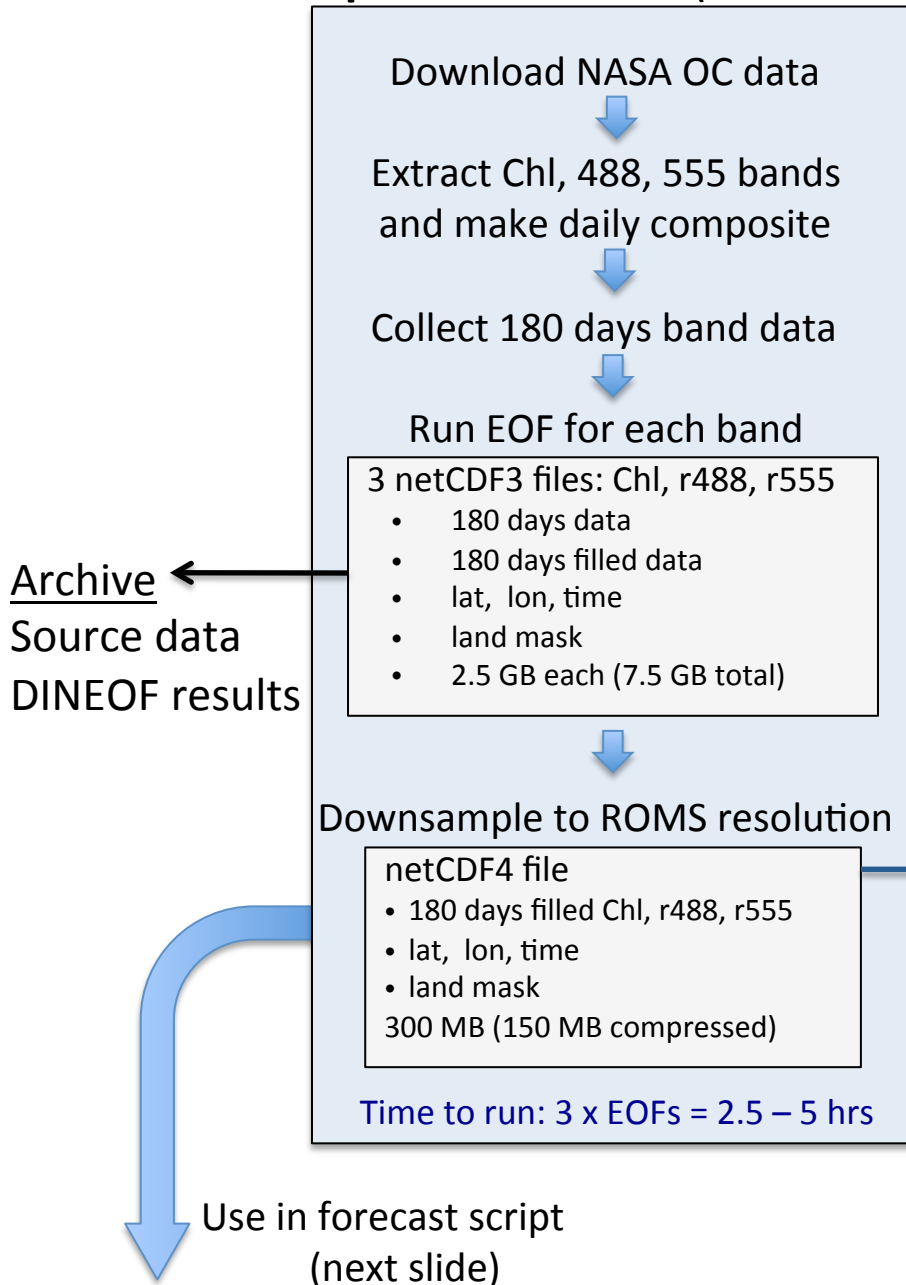
# OPERATIONAL HAB FORECASTING SYSTEM BY 2018/2019





# S4: NOAA Weather Prediction Supercomputer at Univ. of Wisconsin

## Prep Satellite data (CoastWatch)



## Collect ROMS data (CeNCOOS, S4)

netCDF4 file

- 180 days salt
- 180 days temp
- lat, lon, time
- 150 MB

Time to run  
4 min / day

## Nowcast (CeNCOOS, S4)

Run models:

- Pseudo-nitzschia (Pn)
- particulate domoic acid (pda)
- cellular domoic acid (cda)

Time to run:  
5 minutes

Pn, cda, pda netCDF4 files

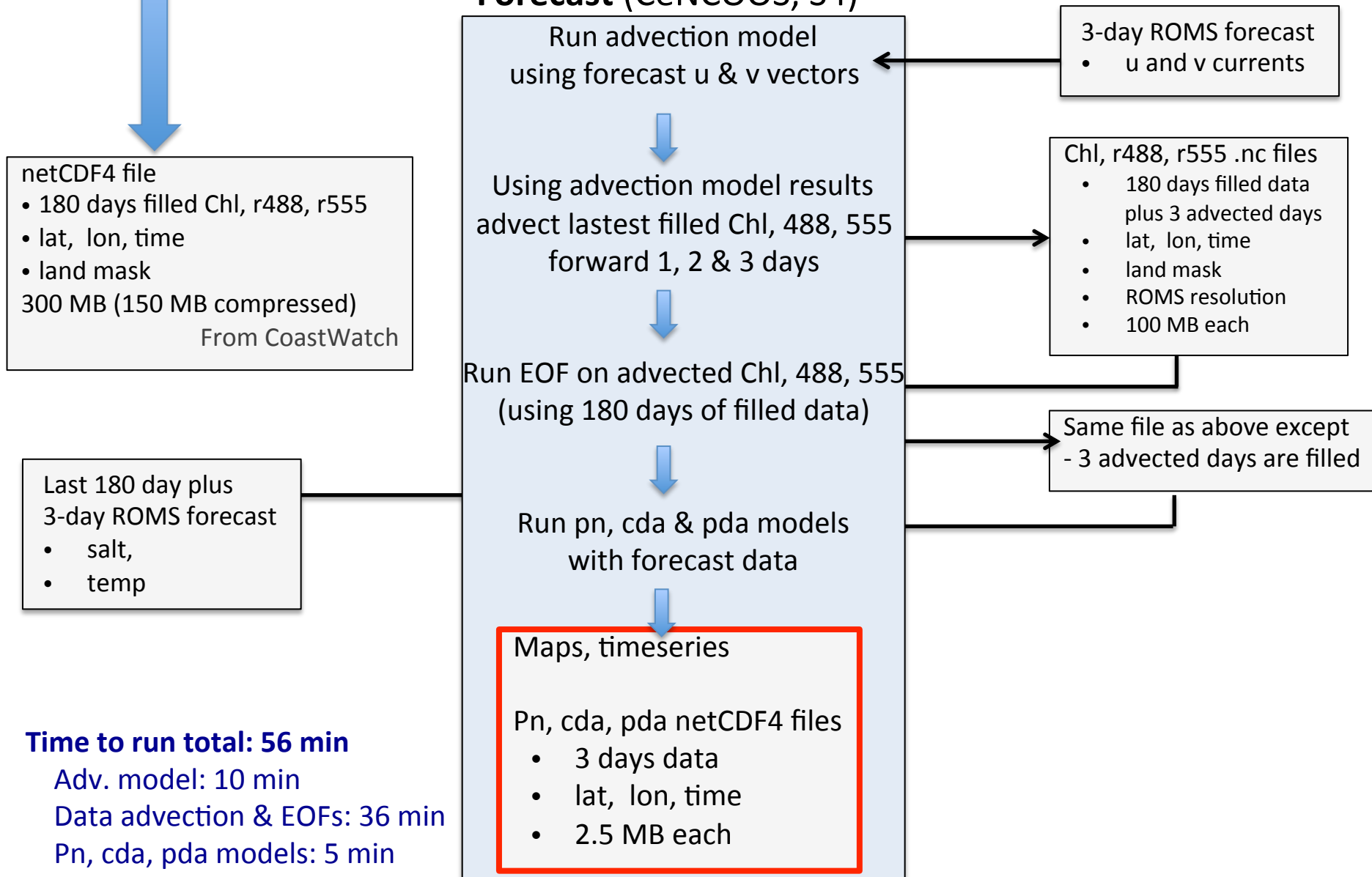
- 180 days data
- lat, lon, time
- 100 MB each

Maps

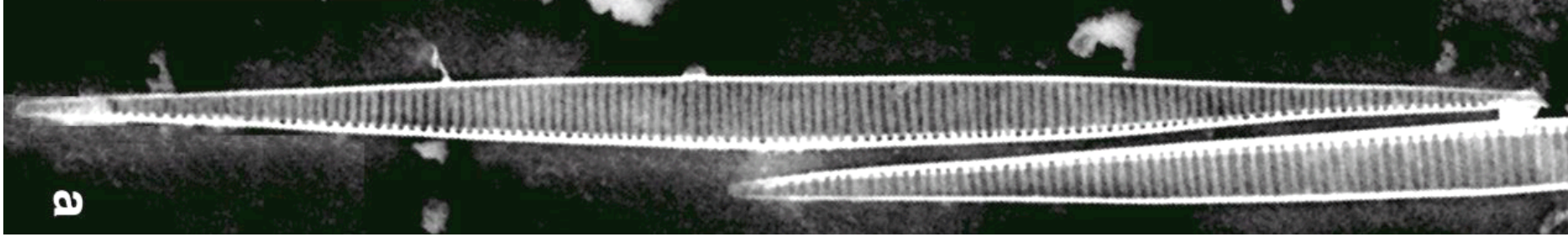
Timeseries

From Prep Satellite data  
(last slide)

## Forecast (CeNCOOS, S4)







# THANK YOU!

[clrande@ucsc.edu](mailto:clrande@ucsc.edu)

<http://www.cencoos.org/data/models/habs>

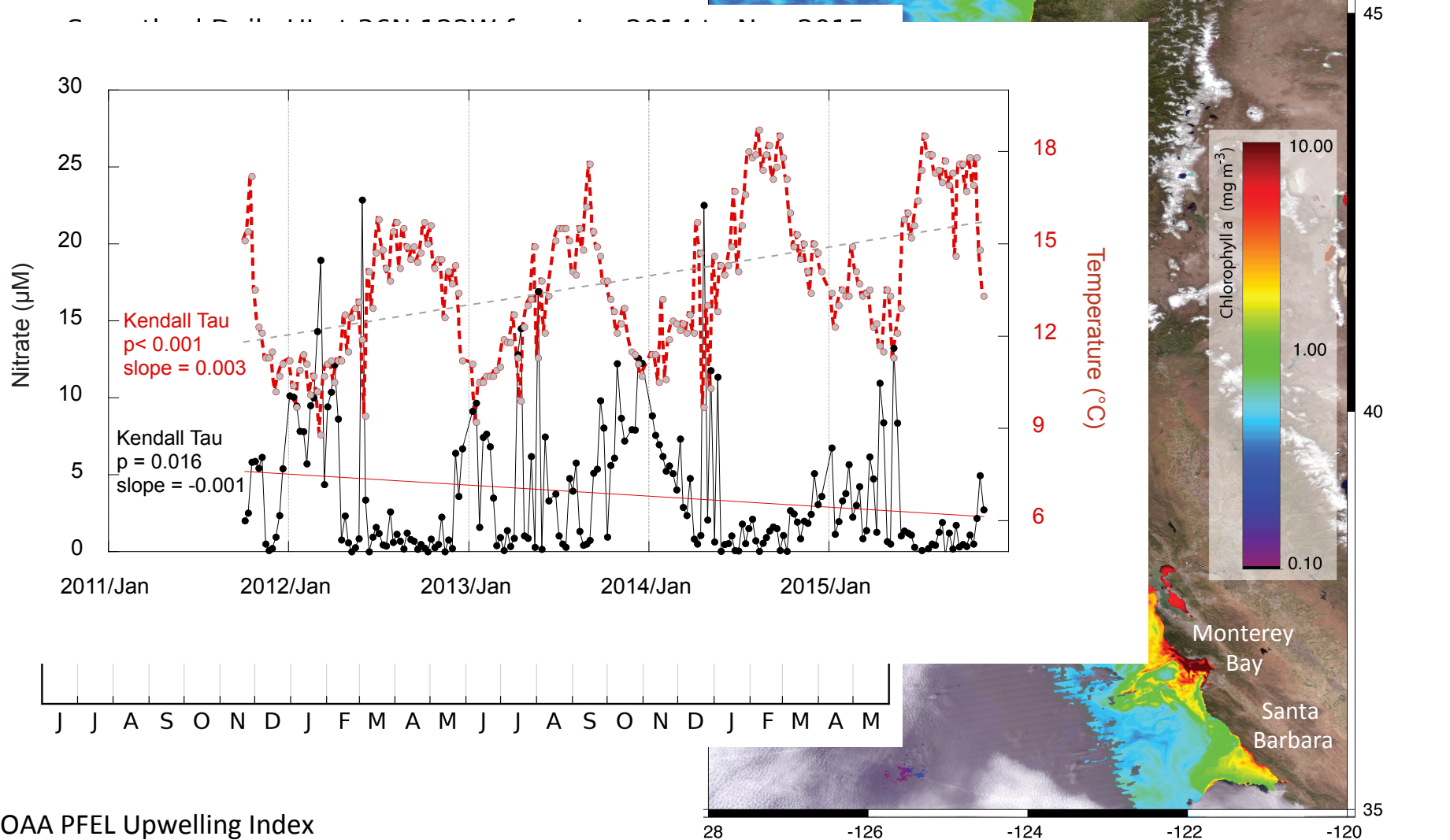
## **Other Sources of Funding:**

NASA Remote Sensing of Water Quality

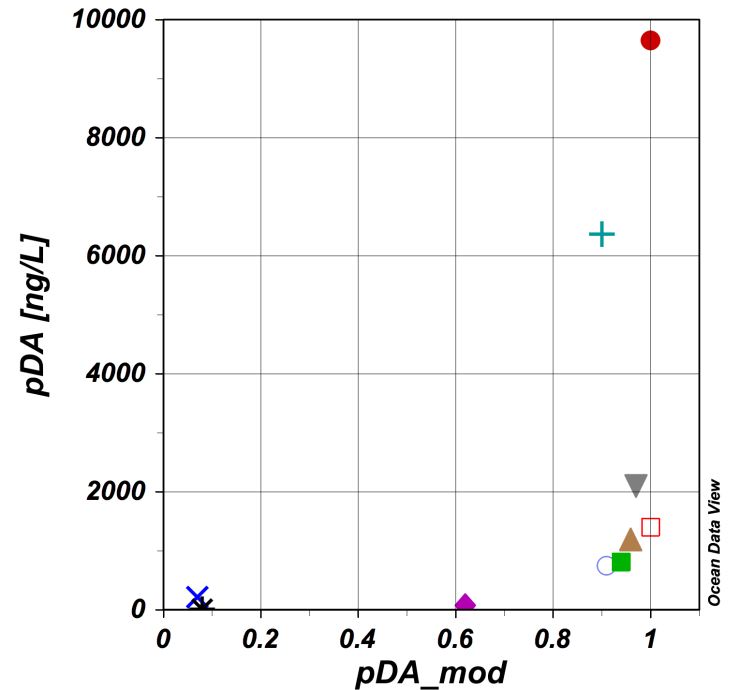
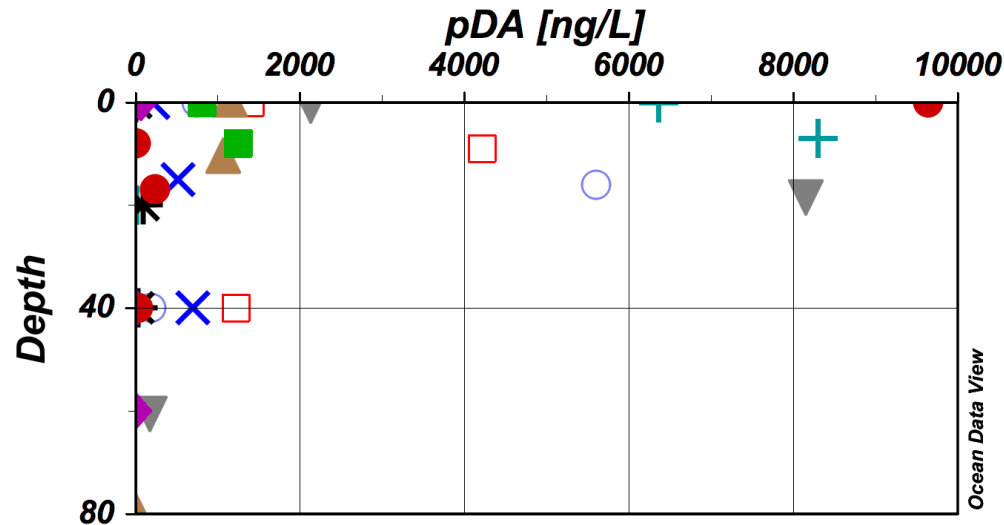
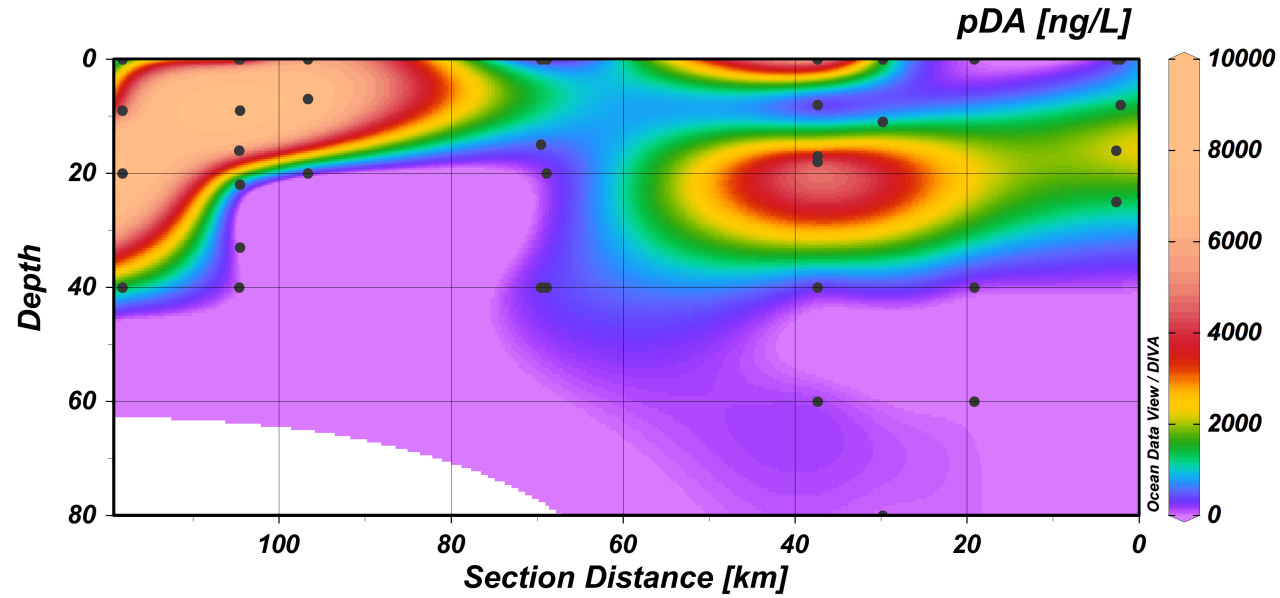
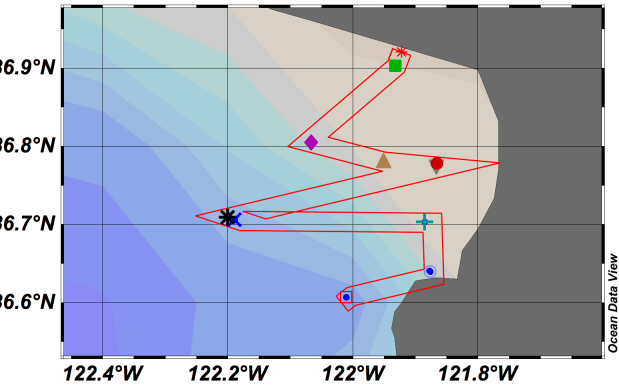
NOAA ECOHAB/MERHAB

CA Sea Grant/Ocean Protection Council

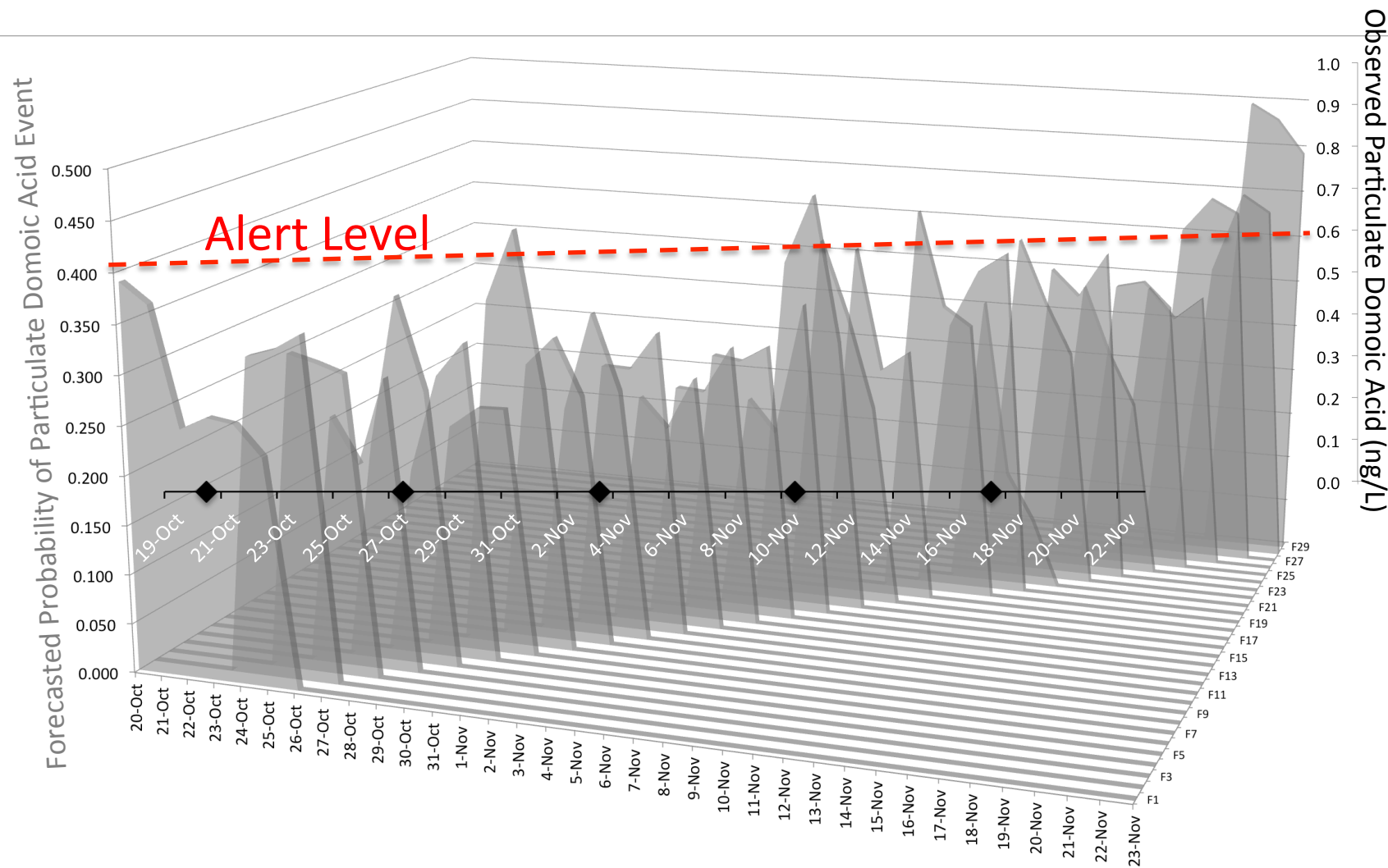
# Upwelling Drives Abundance & Diversity



# ECOHAB – *R/V Carson* Day Cruises (May 12 – June 5)



# pDA FORECASTS @ SC WHARF (OCTOBER – NOVEMBER)

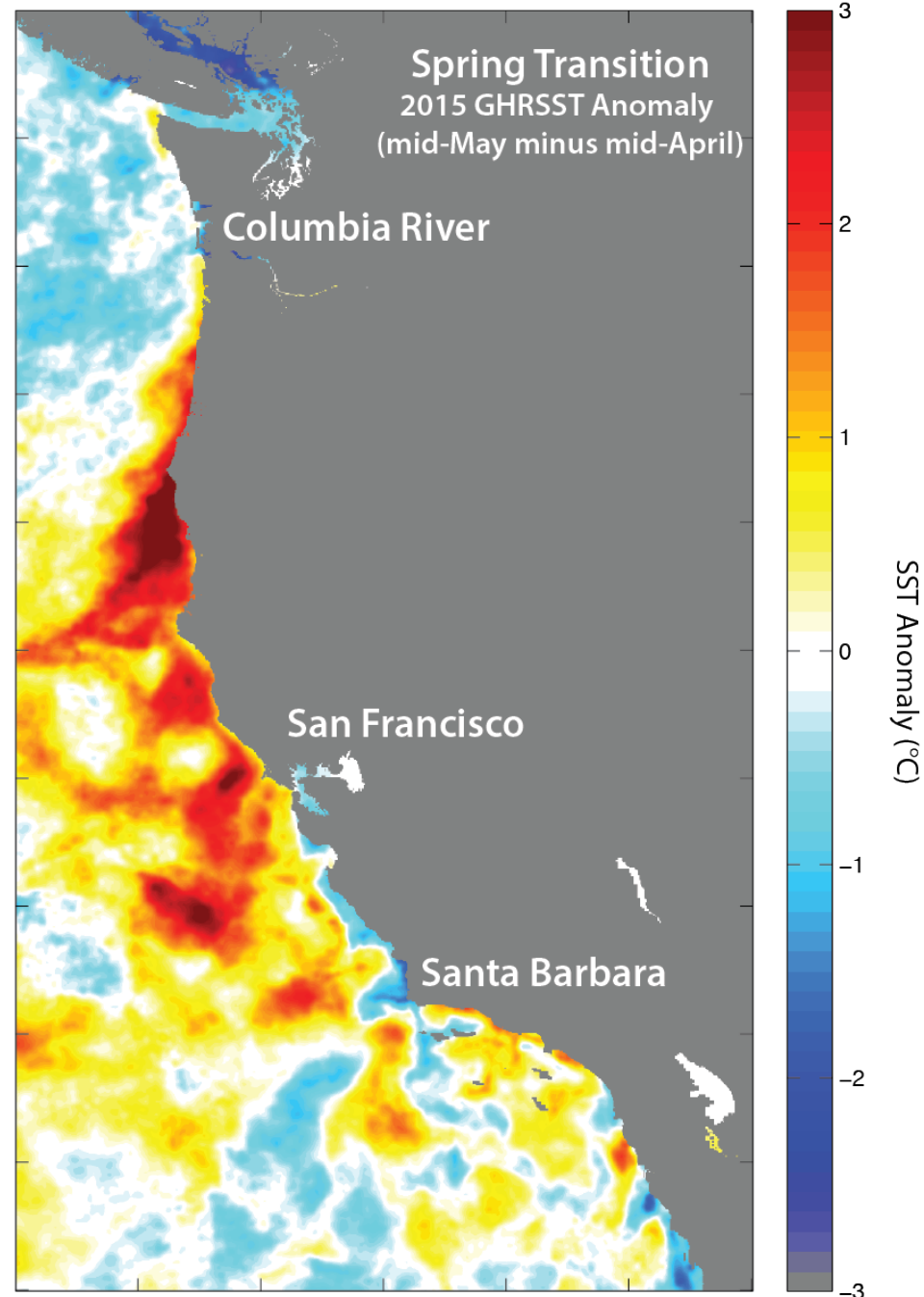


# THE WARM BLOB

Bloom occurred along entire West coast simultaneously

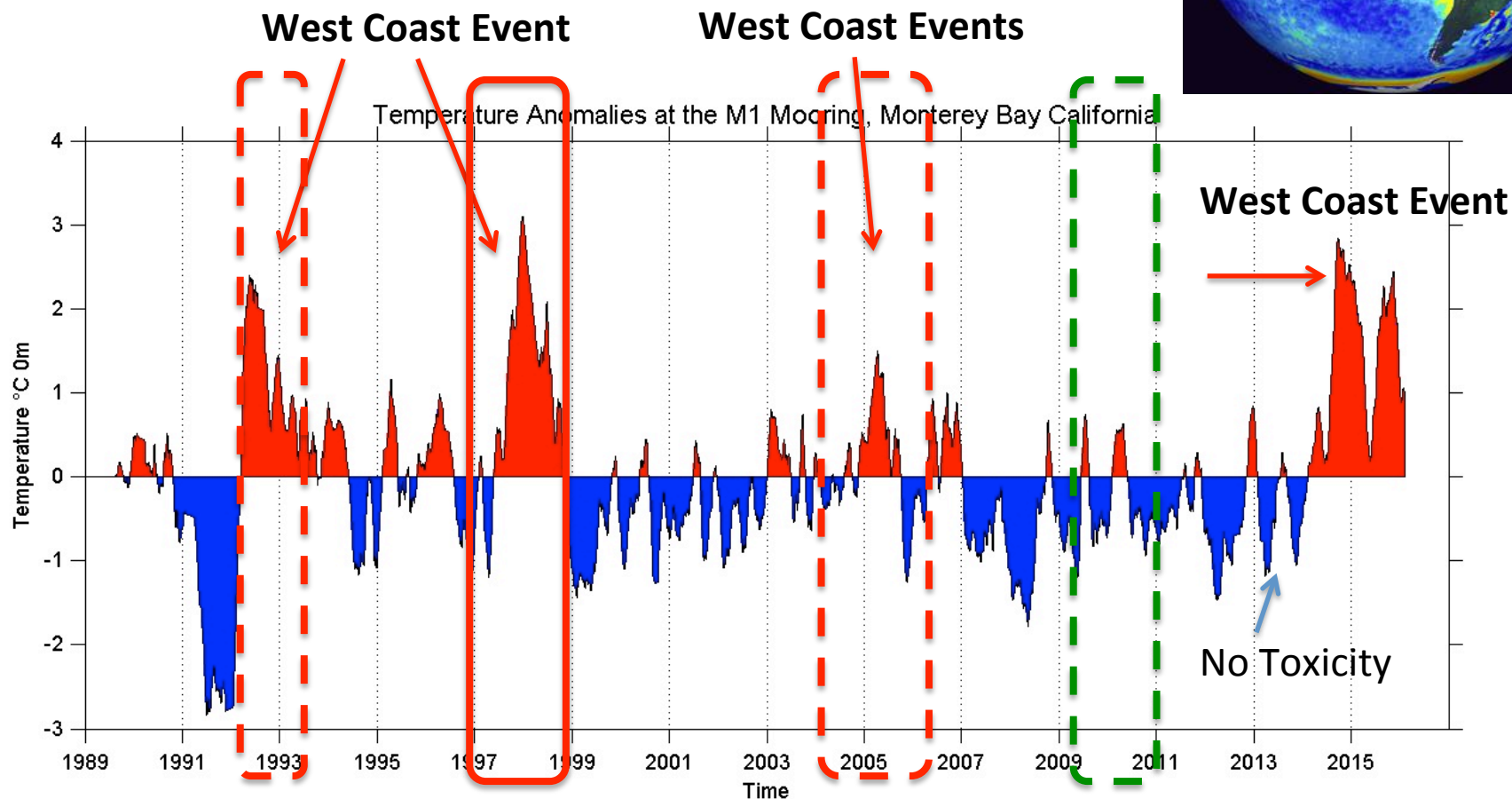
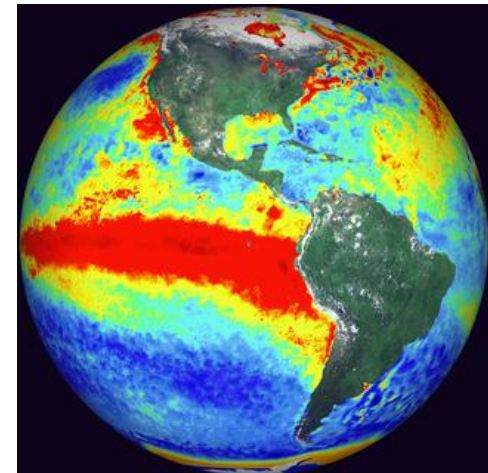
Corresponded with Spring Transition and the coastward propagation of the Pacific Warm Anomaly (“blob”)

Interaction of the blob with coastal upwelling appears to have created the DA event





# 2014-2016: From Bad to Worse? Will El Niño Save Us?

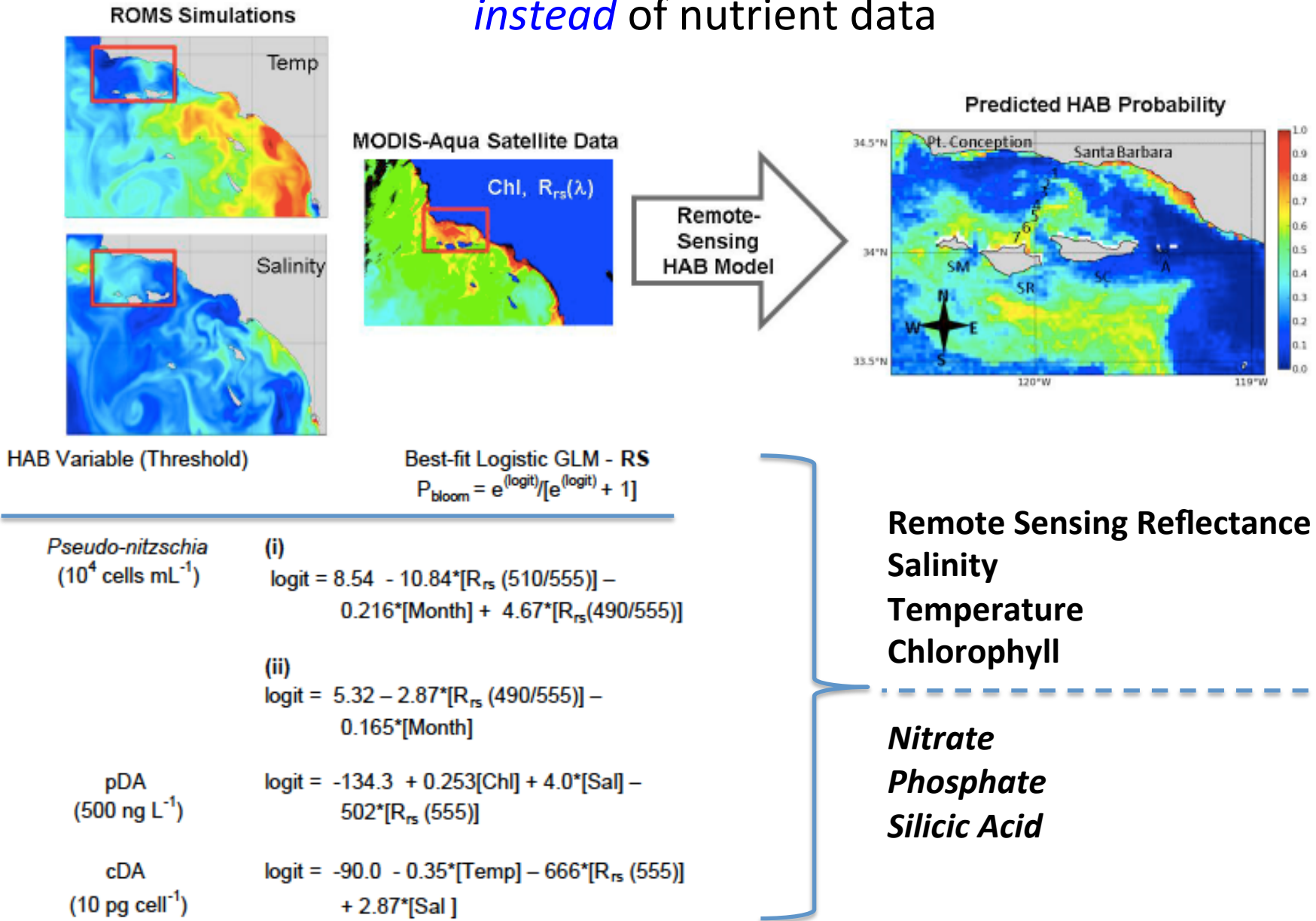


*Note: 60 point moving average applied to daily averaged values.*

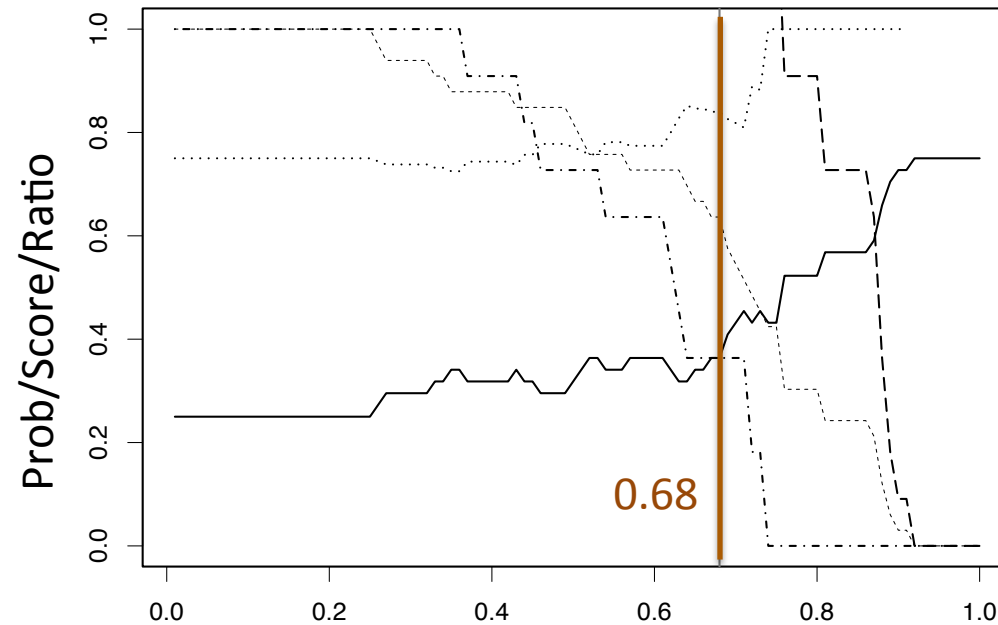
*Monterey Bay Aquarium Research Institute*

*Updated: 10-Feb-2016*

# GLMs that use **Rrs** variables, Chlorophyll, Temperature, and Salinity *instead* of nutrient data

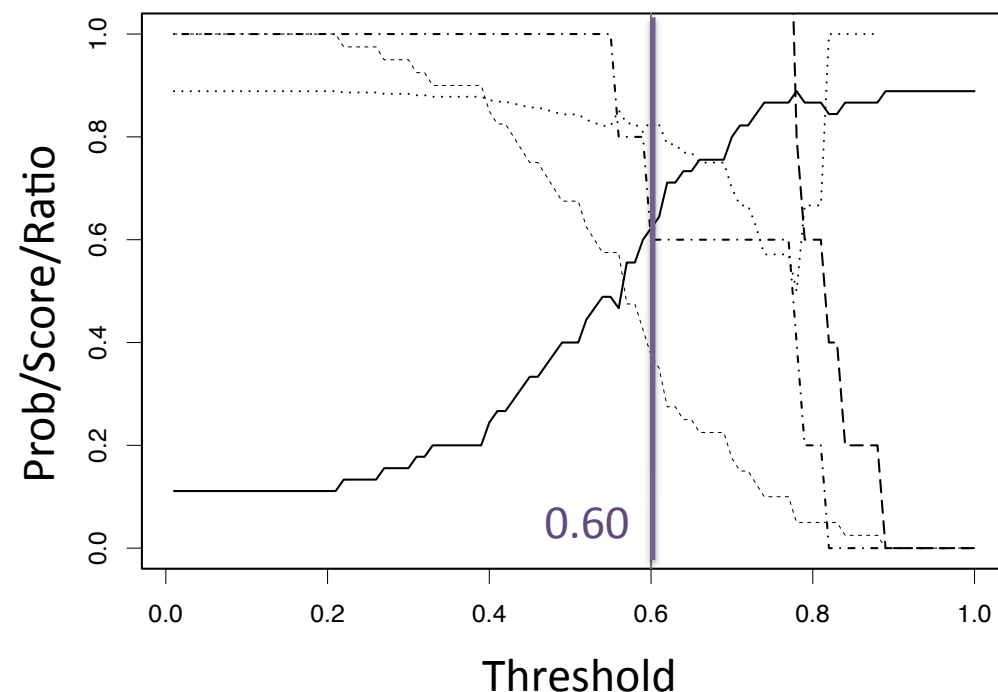


# Year 1 FEASIBILITY STUDY - SKILL ASSESSMENT

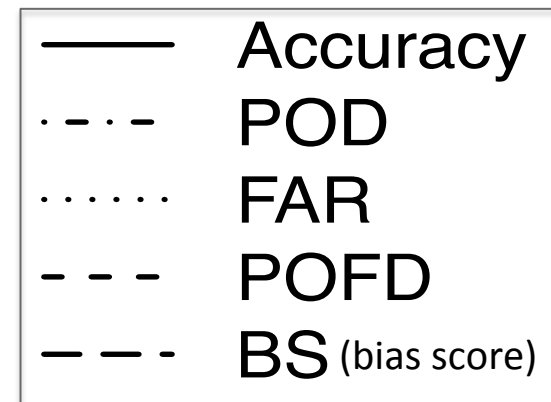


Contingency Plots to Assess  
Model Performance –  
Optimize Prob. Threshold

*Pseudo-nitzschia* at the SC Wharf vs.  
Nearest Model Pixel



Domoic Acid at the SC Wharf vs.  
Nearest Model Pixel



Anderson et al., revised, *Harmful Algae*

# 2015 BLOOM of DOOM

## Dungeness Crab Closure!

### Recreational and Commercial Harvests (Nov-March)



#### Santa Cruz Sentinel NEWS

News ▾ Sports ▾ Business ▾ Entertainment ▾ Lifestyle ▾ Opinion ▾ Obituaries ▾ Place

Home News

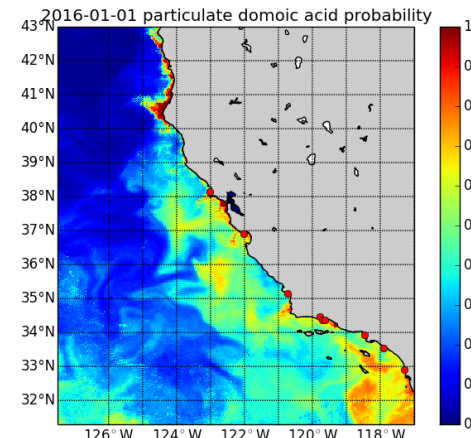
## California's crab-season delay claims Christmas

By Aaron Kinney [akinney@bayareanewsgroup.com](mailto:akinney@bayareanewsgroup.com)

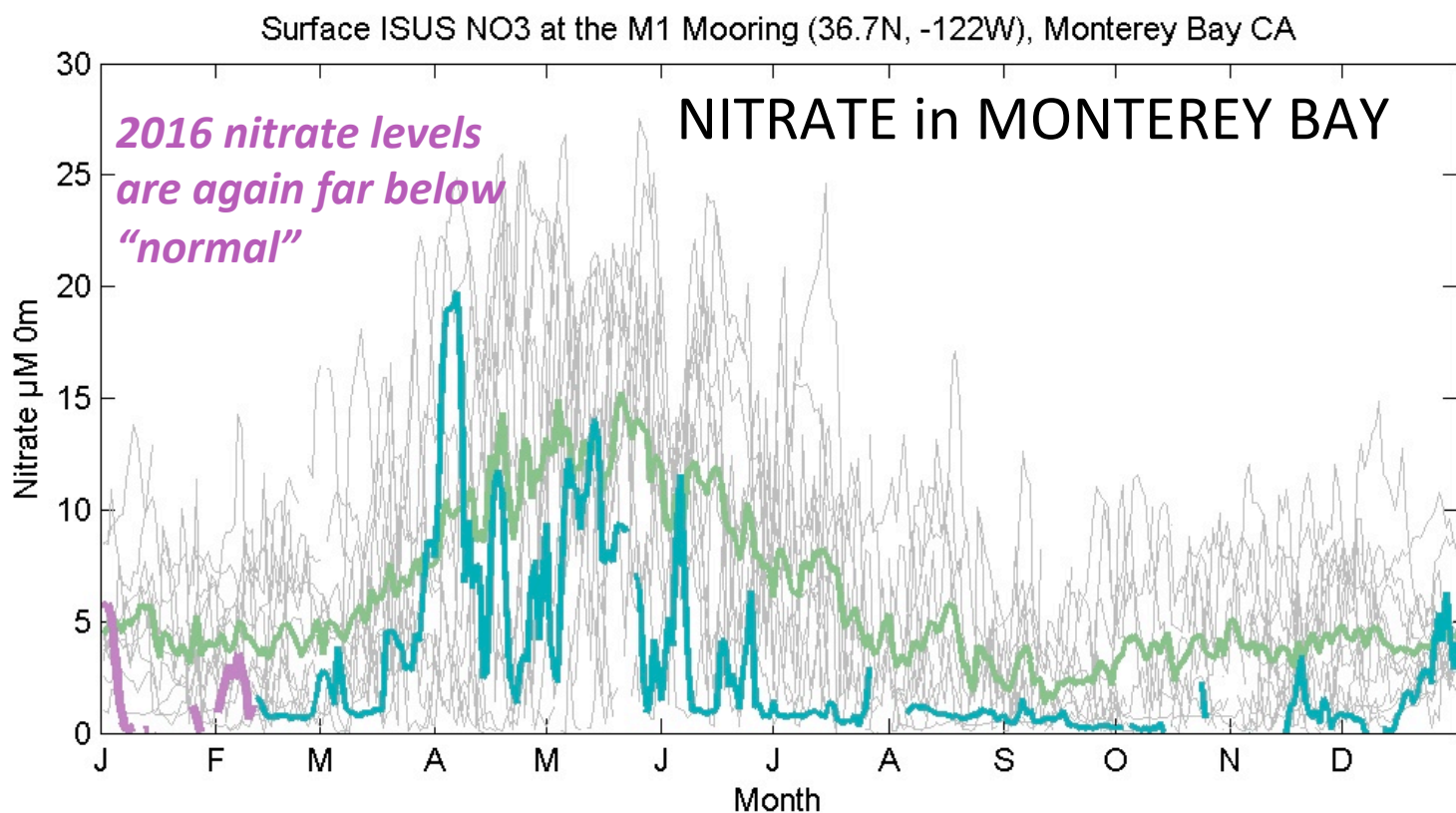
"The domoic acid Grinch took our Christmas crab!" said Phil DiGirolamo, owner of Phil's Fish Market, a popular spot for crab lovers in Moss Landing.



# 2014-2016: From Bad to Worse? Will El Niño Save Us?



*Toxins moving  
South to North  
in response  
to El Niño*



Climatology Minimum on 08-Mar-2010, 0.01 $\mu\text{M}$ ; Maximum on 25-May-2013, 27.52 $\mu\text{M}$   
2016 YTD Minimum on Jan-15, 0.05667 $\mu\text{M}$ ; Maximum on Jan-02, 5.78 $\mu\text{M}$